

# Pull Test Report

JLMJ Consulting - NACE # 232409

5/27/2019

SAMPLE #1 - CRS (white) & C2M (gray)

CRS (white) – @ 2.8 mils / 70 microns

10 Day Cure

5.52 MPa / mm<sup>2</sup>

800 lbs / mm<sup>2</sup>

Glue broke, half material still intact

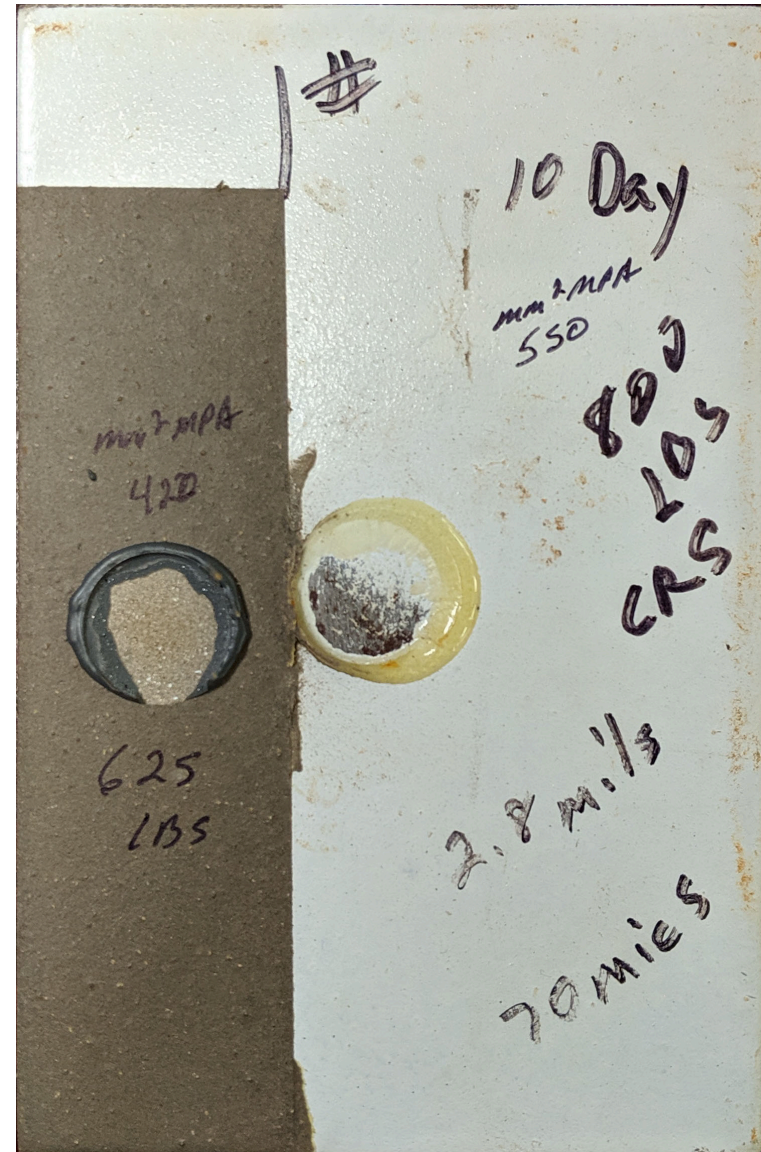
C2M (gray) on top, CRS (white) below

10 Day Cure

4.31 MPa / mm<sub>2</sub>

625 lbs / mm<sup>2</sup>

Glue released on half, C2M intact



# Pull Test Report

JLMG Consulting - NACE # 232409

5/27/2019

SAMPLE #2- CRS (white) & C2M (gray)

CRS (white) – @ 1.8 mils / 45 microns

7 Day Cure

5.17 MPa / mm<sup>2</sup>

750 lbs / mm<sup>2</sup>

Glue released on half

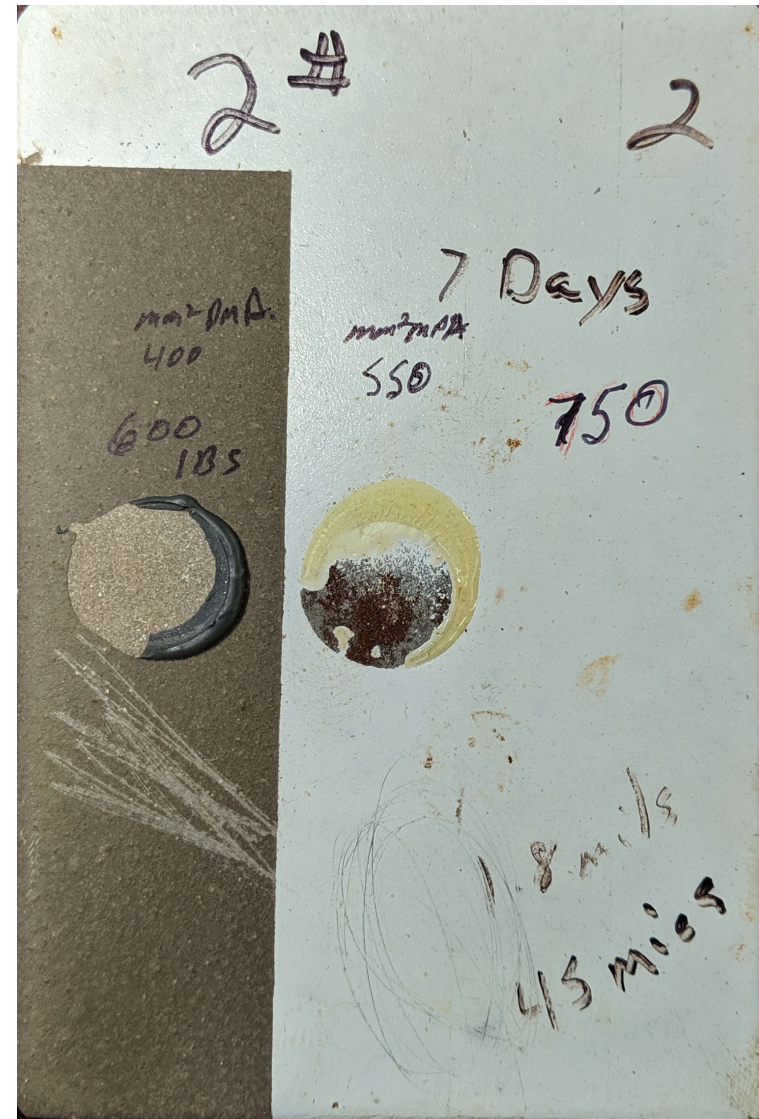
C2M (gray) on top, CRS (white) below

7 Day Cure

4.14 MPa / mm<sup>2</sup>

600 lbs / mm<sup>2</sup>

Glue released, C2M intact





# Pull Test Report

JLMJ Consulting - NACE # 232409

5/27/2019

SAMPLE #2 - CRS (white) & C2M (gray)

CRS (clear) on top, C2M (gray) below

3 Day Cure

2.76 MPa / mm<sup>2</sup>

400 lbs / mm<sub>2</sub>

CRS (white) on top, C2M (gray) below

3 Day Cure

4.13 MPa / mm<sup>2</sup>

600 lbs / mm<sub>2</sub>

